



# DRINKING FOUNTAIN

## A152 Series

### MODEL A152400S

BARRIER FREE, BI-LEVEL,  
WALL MOUNTED DRINKING FOUNTAIN  
WITH 32" TRIM PANEL

#### STANDARD FEATURES

- Child or Adult ADA Compliant (when properly installed)
- 18 gage, 304 stainless steel
- Polished stainless steel, anti-rotation, non-squirt bubbler
- 100 mesh inlet strainer
- Vandal resistant screws
- P-trap
- Mounting plate with hardware
- 32 inch trim panel

#### SUGGESTED SPECIFICATIONS

Model A152400S is a wall mounted, bi-level drinking fountain made from 18 gage, 304 stainless steel with a brushed finish. Unit shall be activated by self-closing, frontal push pads, by using less than 5 pounds of force, which activates internally mounted valves with adjustable stream regulators controlling the water flow. Bubblers shall be polished stainless steel with non-squirt features and operate on a water pressure range of 20-105 psig. Unit shall have a uniquely designed, two-piece contoured bowls with P-traps integral to the unit. Unit is certified to ANSI A117.1, Public Law 111-380 (NO-LEAD), CHSC 116875 and NSF/ANSI 61, Section 9. Fixture meets ADA, ADA Standing Person, and ADA Child requirements when mounted appropriately.



#### MODEL:

(Must Specify)

##### FLEXIBLE BUBBLER (LOW FLOW)

- ☐ A152200F Bronze Finish
- ☐ A152300F Gold Finish (High Polish)
- ☐ A152400F Satin stainless Finish

##### LEAD-FREE STAINLESS STEEL BUBBLER

- ☐ A152200S Bronze Finish
- ☐ A152300S Gold Finish (High Polish)
- ☐ A152400S Satin stainless Finish (Shown)

#### OPTIONS

(additional costs may be incurred)

- ☐ -AP3 Access panel for a dual fountain  
(Must select -MF8)
- ☐ -CSC Concealed support carrier
- ☐ -FRA4 Freeze resistant valve system
- ☐ -HP High polished stainless steel
- ☐ -MF8 Mounting frame for a dual fountain
- ☐ -RBL Reverse bi-level
- ☐ -SK2 Skirt kit, 14 gage stainless steel, for upper unit
- ☐ -SK3 Skirt kit, stainless steel, for upper unit
- ☐ -WF1 1500 gallon capacity, NSF 42+53,  
1 micron lead reduction filter



Member of  
U.S. Green  
Building  
Council



Recyclable  
Product



Water  
Conserving  
Product

Please visit [www.murdockmfg.com](http://www.murdockmfg.com)  
for most current specifications.

Complies  
with the  
following  
standards:



Federal  
Public Law  
111-380  
(No Lead)



MURDOCK MFG. • 15125 Proctor Avenue • City of Industry, CA 91746 USA  
Phone 800-453-7465 or 626-333-2543 • Fax 626-855-4860 • [www.murdockmfg.com](http://www.murdockmfg.com)

Member of  
MORRIS GROUP  
INTERNATIONAL



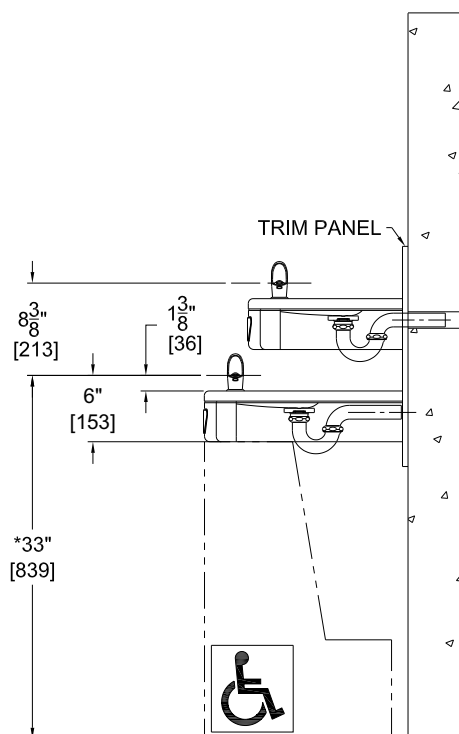
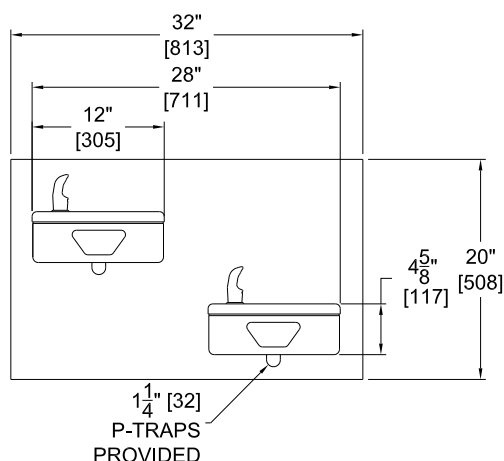
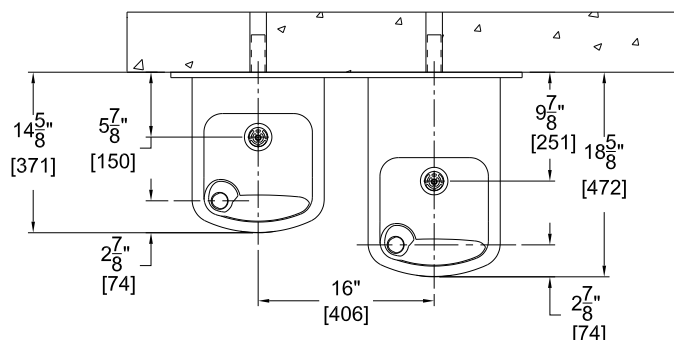
# DRINKING FOUNTAIN

All dimensions are subject to manufactures tolerance of plus or minus 1/8" nominal and subject to change without notice. Murdock Mfg. assumes no responsibility for use of void or superseded data. Dimensions may change with the addition of optional accessories. Murdock Mfg.™, Member of Morris Group International™. Please visit [www.Murdockmfg.com](http://www.Murdockmfg.com) for most current specifications.

## A152 Series

### MODEL A152400S

BARRIER FREE, BI-LEVEL,  
WALL MOUNTED DRINKING FOUNTAIN  
WITH 32" TRIM PANEL



#### GENERAL NOTES:

1. ALL DIMENSIONS ARE IN INCHES [MM].
- \*2. DIMENSIONS SHOWN ARE FOR RECOMMENDED ADULT HEIGHT, ADJUST VERTICAL DIMENSIONS AS NECESSARY TO COMPLY WITH FEDERAL STATE AND LOCAL CODES.
3. STOP VALVE NOT PROVIDED.

Murdock Mfg.™ warrants that its products are free from defects in material or workmanship under normal use and service for a period of one year from date of shipment. Murdock's liability under this warranty shall be discharged solely by replacement or repair of defective material, provided Murdock™ is notified in writing within one year from date of shipment, F.O.B. Industry, California.

#### SELECTION SUMMARY & APPROVAL FOR MANUFACTURING

Model Number & Options _____	Quantity _____
Company _____	
Contact _____	Title _____
Signature (Approval for Manufacturing) _____	Date _____

All dimensions are subject to manufactures tolerance of plus or minus 1/8" nominal and subject to change without notice. Murdock assumes no responsibility for use of void or superseded data. Dimensions may change with the addition of optional accessories. Murdock Mfg.™, Member of Morris Group International™. Please visit [www.murdockmfg.com](http://www.murdockmfg.com) for most current specifications.

MURDOCK MFG. • 15125 Proctor Avenue • City of Industry, CA 91746 USA  
Phone 800-453-7465 or 626-333-2543 • Fax 626-855-4860 • [www.murdockmfg.com](http://www.murdockmfg.com)

Member of  
MORRIS GROUP  
INTERNATIONAL