



# DRINKING FOUNTAIN

## A181 Series

### MODEL A181400S

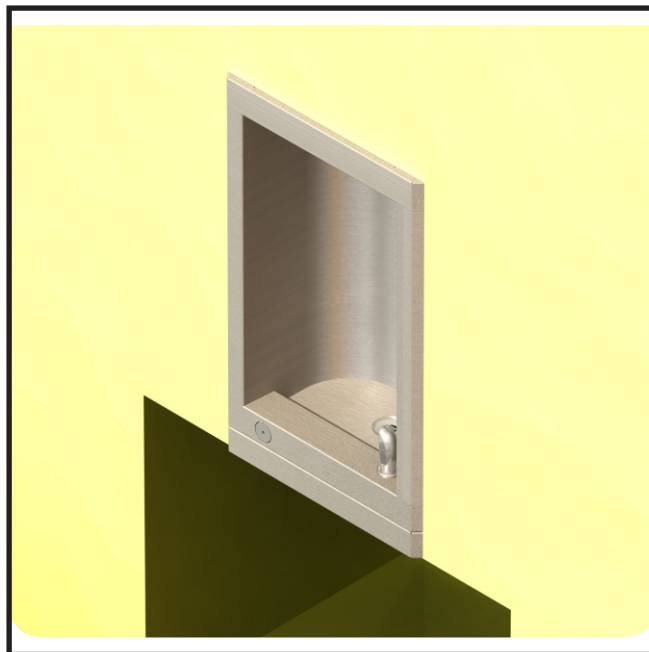
BARRIER FREE, FULLY RECESSED  
WALL MOUNTED DRINKING FOUNTAIN

#### STANDARD FEATURES

- Child or Adult ADA Compliant (when properly installed)
- 18 gage, 304 stainless steel cabinet
- 16 gage, galvanized mounting frame
- Polished Stainless Steel, anti-rotation, non-squirt bubbler
- 100 mesh inlet strainer
- Vandal resistant screws

#### SUGGESTED SPECIFICATIONS

Model A181400S is a fully recessed, wall mounted drinking fountain and cuspidor made from 18 gage, 304 stainless steel with a brushed finish. Unit shall be activated by a surface mounted, chrome plated brass front pushbutton using less than 5 pounds of force. Bubbler shall be Stainless Steel, with an integrally designed non-squirt feature and operates on a water pressure range of 20-105 psig. Unit is certified to ANSI A117.1, Public Law 111-380 (NO-LEAD), CHSC 116875 and NSF/ANSI 61, Section 9. Fixture meets ADA, ADA Standing Person, and ADA Child requirements when mounted appropriately.



"INDOOR USE ONLY"

#### MODEL:

(Must Specify)

- |                                   |                         |
|-----------------------------------|-------------------------|
| <input type="checkbox"/> A181400F | Flexible Bubbler        |
| <input type="checkbox"/> A181400S | Stainless Steel Bubbler |

#### OPTIONS

(additional costs may be incurred)

- |                               |              |
|-------------------------------|--------------|
| <input type="checkbox"/> -GF2 | Glass filler |
| <input type="checkbox"/> -HP  | High Polish  |



Member of  
U.S. Green  
Building  
Council



Recyclable  
Product



Water  
Conserving  
Product

Please visit [www.murdockmfg.com](http://www.murdockmfg.com)  
for most current specifications.

Complies  
with the  
following  
standards:



Federal  
Public Law  
111-380  
(No Lead)



MURDOCK MFG. • 15125 Proctor Avenue • City of Industry, CA 91746 USA  
Phone 800-453-7465 or 626-333-2543 • Fax 626-855-4860 • [www.murdockmfg.com](http://www.murdockmfg.com)

Member of  
MORRIS GROUP  
INTERNATIONAL



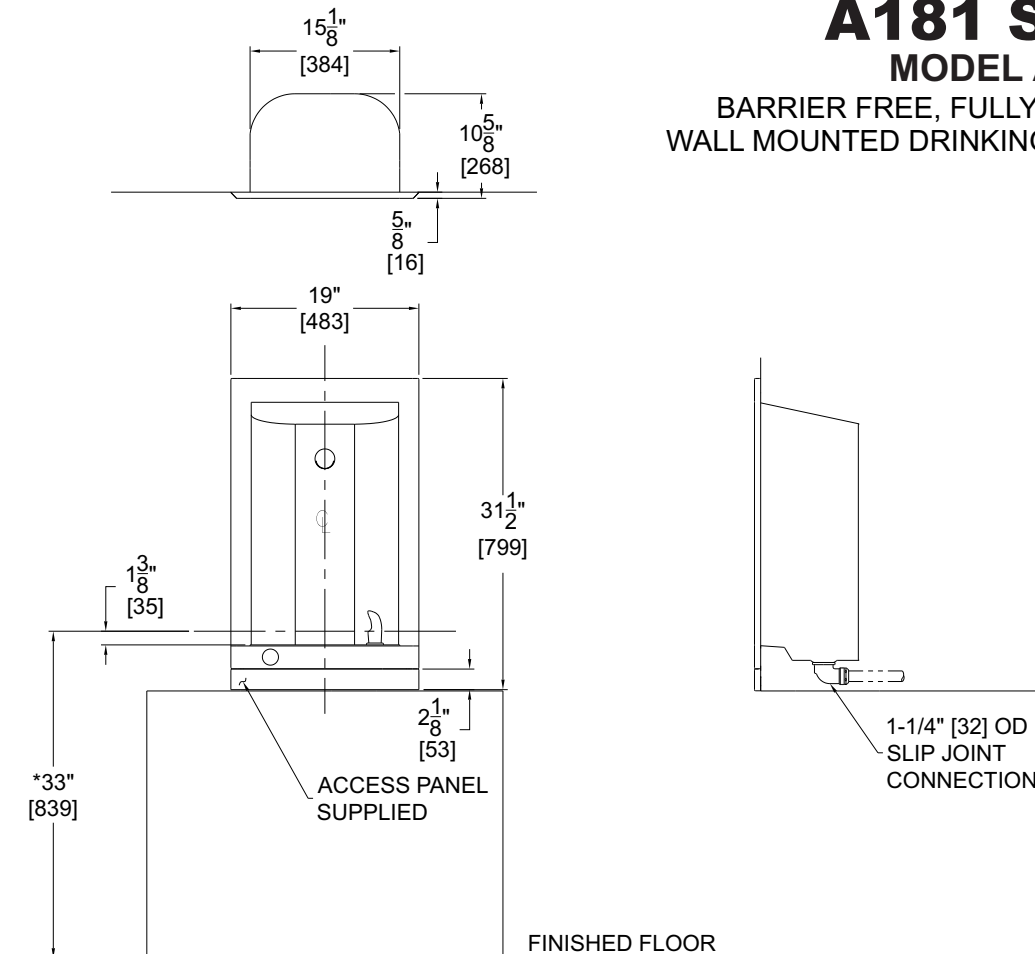
# DRINKING FOUNTAIN

All dimensions are subject to manufactures tolerance of plus or minus 1/8" nominal and subject to change without notice. Murdock Mfg. assumes no responsibility for use of void or superseded data. Dimensions may change with the addition of optional accessories. Murdock Mfg.™, Member of Morris Group International™. Please visit [www.Murdockmfg.com](http://www.Murdockmfg.com) for most current specifications.

## A181 Series

### MODEL A181400S

BARRIER FREE, FULLY RECESSED  
WALL MOUNTED DRINKING FOUNTAIN



#### GENERAL NOTES:

1. ALL DIMENSIONS ARE IN INCHES [MM].
- \*2. DIMENSIONS SHOWN ARE FOR RECOMMENDED ADULT HEIGHT.  
ADJUST VERTICAL DIMENSIONS AS NECESSARY TO COMPLY WITH  
FEDERAL, STATE, & LOCAL CODES.
3. STOP VALVE NOT PROVIDED.

Murdock Mfg.™ warrants that its products are free from defects in material or workmanship under normal use and service for a period of one year from date of shipment. Murdock's liability under this warranty shall be discharged solely by replacement or repair of defective material, provided Murdock™ is notified in writing within one year from date of shipment, F.O.B. Industry, California.

#### SELECTION SUMMARY & APPROVAL FOR MANUFACTURING

Model Number & Options _____	Quantity _____
Company _____	
Contact _____	Title _____
Signature (Approval for Manufacturing) _____	Date _____

All dimensions are subject to manufactures tolerance of plus or minus 1/8" nominal and subject to change without notice. Murdock assumes no responsibility for use of void or superseded data. Dimensions may change with the addition of optional accessories. Murdock Mfg.™, Member of Morris Group International™. Please visit [www.murdockmfg.com](http://www.murdockmfg.com) for most current specifications.

**MURDOCK MFG.** • 15125 Proctor Avenue • City of Industry, CA 91746 USA  
Phone 800-453-7465 or 626-333-2543 • Fax 626-855-4860 • [www.murdockmfg.com](http://www.murdockmfg.com)

Member of  
**MORRIS GROUP**  
INTERNATIONAL