



# DRINKING FOUNTAIN

## A172UBLVR Series

### MODEL A172100S-UBL-VR-BF2

BARRIER FREE, VANDAL RESISTANCE  
BUTTON, UNIVERSAL BI-LEVEL, WALL  
MOUNTED DRINKING FOUNTAIN WITH  
-BF2 SENSOR OPERATED BOTTLE FILLER

#### STANDARD FEATURES

- Child or Adult ADA Compliant (when properly installed)
- Universal Bi-Level -Can be installed left unit high or right unit high with no additional parts required
- Granite powder coated apron and one- piece bottom wrapper
- Polished Stainless Steel basin and flush mounted chrome plated brass button
- 100 mesh inlet strainer
- Vandal resistant screws and screened louvers
- Individual hanging brackets provided
- Auto-stop allows service of cartridge and strainer without shutting off water supply
- 115v Plug-in transformer (Bottle Filler)
- Hand Free Sensor Operation (Bottle Filler)
- Laminar Flow Water Supply (Bottle Filler)
- 1 G.P.M. Fill Rate (Bottle Filler)
- 100% Lead & Brass Free

#### SUGGESTED SPECIFICATIONS

Model A172100S-UBL-VR-BF2 is a self-contained, vandal resistant bi-level drinking fountain. Units shall be activated by chrome plated brass front pushbuttons by using less than 5 pounds of force. Bubblers shall be Lead-Free Stainless Steel with an integrally designed non-squirt feature and operate on a water pressure range of 20-105 psig. Tops shall be constructed from 304 Stainless steel and have an integral drain. Unit includes model BF2 sensor operated bottle filler, cabinets shall be stainless steel. Drinking fountain and bottle filler Unit is certified to ANSI A117.1, Public Law 111-380 (NO-LEAD), CHSC 116875 and NSF/ANSI 61, Section 9. Fixture meets ADA, ADA Standing Person, and ADA Child requirements when mounted appropriately.



Model A172400S-UBL-VR-BF2S-BCD Shown  
\*\* U.S. DESIGN PATENT D718, 971

**Maintenance Advantage™**  
Water Cooler by Acorn Engineering Company

#### MODEL:

(Must Specify)

- |   |                                |
|---|--------------------------------|
| <input type="checkbox"/> A172100S-UBL-VR-BF2  | Granite Finish                 |
| <input type="checkbox"/> A172400S-UBL-VR-BF2S | Satin Stainless Finish (Shown) |

#### OPTIONS

(additional costs may be incurred)

- |                                |   |
|--------------------------------|---|
| <input type="checkbox"/> -CSC3 | Concealed support carrier                                       |
| <input type="checkbox"/> -SK5  | Skirt kit for upper unit  |
| <input type="checkbox"/> -WB3  | Wall bezel, left unit high, right low                           |
| <input type="checkbox"/> -WB4  | Wall bezel, right unit high, left low                           |
| <input type="checkbox"/> -WF1  | 1500 gallon capacity, NSF 42+53, 1 micron lead reduction filter |

#### BOTTLE FILLER OPTIONS

- |                               |  |
|-------------------------------|--|
| <input type="checkbox"/> -BAT | Battery Operated (N/A With Bottle Counter) |
| <input type="checkbox"/> -BCD | Bottle Counter Display                     |



Member of  
U.S. Green  
Building  
Council



Recyclable  
Product



Water  
Conserving  
Product

Please visit [www.murdockmfg.com](http://www.murdockmfg.com)  
for most current specifications.

Complies  
with the  
following  
standards:



Federal  
Public Law  
111-380  
(No Lead)



**MURDOCK MFG.** • 15125 Proctor Avenue • City of Industry, CA 91746 USA  
Phone 800-453-7465 or 626-333-2543 • Fax 626-855-4860 • [www.murdockmfg.com](http://www.murdockmfg.com)

Member of  
**MORRIS GROUP**  
INTERNATIONAL

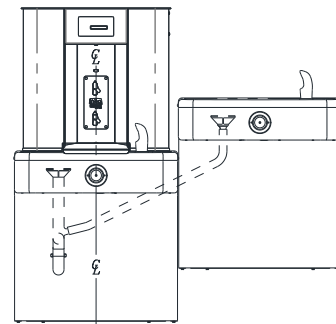
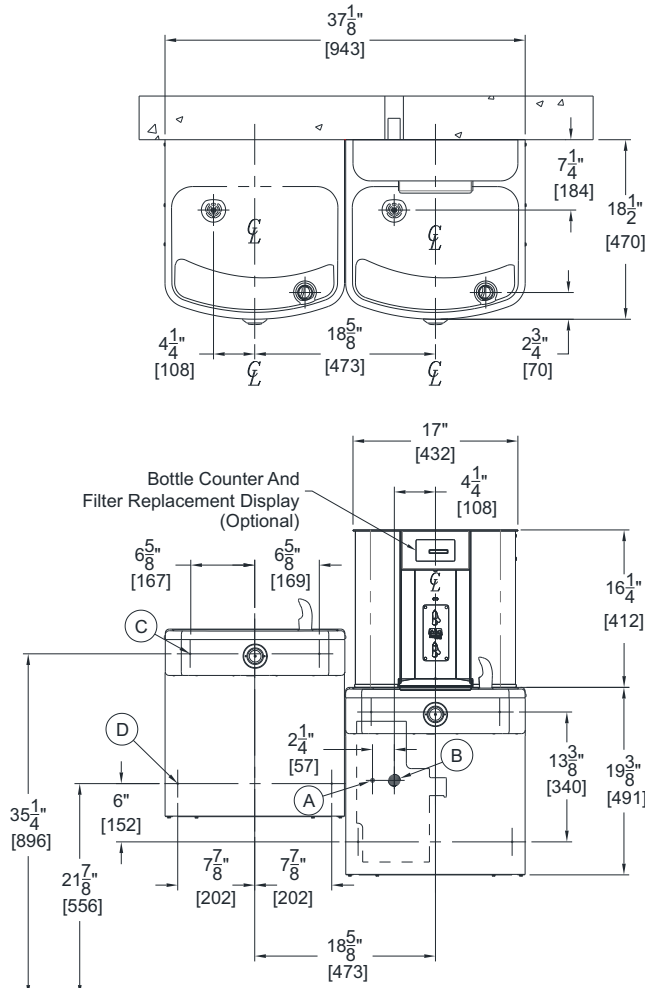


# DRINKING FOUNTAIN

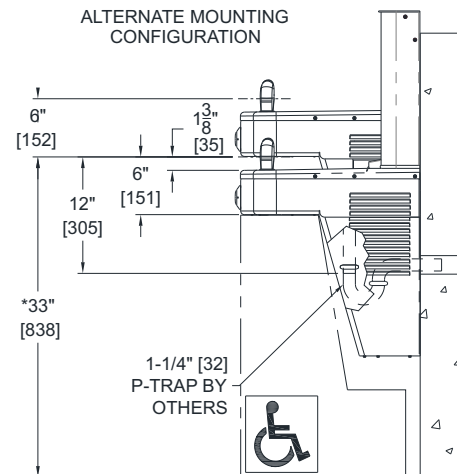
All dimensions are subject to manufactures tolerance of plus or minus 1/8" nominal and subject to change without notice. Murdock Mfg. assumes no responsibility for use of void or superseded data. Dimensions may change with the addition of optional accessories. Murdock Mfg.™, Member of Morris Group International™. Please visit [www.Murdockmfg.com](http://www.Murdockmfg.com) for most current specifications.

## A172UBLVR Series MODEL A172100S-UBL-VR-BF2-BCD

BARRIER FREE, VANDAL RESISTANCE  
BUTTON, UNIVERSAL BI-LEVEL, WALL  
MOUNTED DRINKING FOUNTAIN WITH -BF2  
SENSOR OPERATED BOTTLE FILLER



ALTERNATE MOUNTING  
CONFIGURATION



### GENERAL NOTES:

1. ALL DIMENSIONS ARE IN INCHES [MM]
2. ALLOW 4 INCHES [102 MM] MINIMUM CLEARANCE PER SIDE FOR VENTILATION
- \*3. DIMENSIONS SHOWN ARE FOR RECOMMENDED ADULT HEIGHT. ADJUST VERTICAL DIMENSIONS AS NECESSARY TO COMPLY WITH FEDERAL, STATE, & LOCAL CODES.
4. STOP VALVE, P-TRAP, & ELECTRICAL OUTLET NOT SUPPLIED.
5. IMPORTANT: UNITS MUST BE ATTACHED TO WALL WITH APPROPRIATE WALL ANCHOR SCREWS

- A. 3/8" NCT SUPPLY INLET
- B. WASTE OUTLET FOR 1-1/4" P-TRAP BY OTHERS.
- C. Ø3/8" HANGER BRACKET PUNCHING, 3 PLACES FOR ANCHORING HARDWARE BY OTHERS.
- D. Ø1/4" PUNCHING, 2 PLACES FOR ANCHORING HARDWARE BY OTHERS.

Murdock Mfg.™ warrants that its products are free from defects in material or workmanship under normal use and service for a period of one year from date of shipment. Murdock's liability under this warranty shall be discharged solely by replacement or repair of defective material, provided Murdock™ is notified in writing within one year from date of shipment, F.O.B. Industry, California.

### SELECTION SUMMARY & APPROVAL FOR MANUFACTURING

Model Number & Options _____	Quantity _____
Company _____	
Contact _____	Title _____
Signature (Approval for Manufacturing) _____	Date _____

All dimensions are subject to manufactures tolerance of plus or minus 1/8" nominal and subject to change without notice. Murdock assumes no responsibility for use of void or superseded data. Dimensions may change with the addition of optional accessories. Murdock Mfg.™, Member of Morris Group International™. Please visit [www.murdockmfg.com](http://www.murdockmfg.com) for most current specifications.

MURDOCK MFG. • 15125 Proctor Avenue • City of Industry, CA 91746 USA  
Phone 800-453-7465 or 626-333-2543 • Fax 626-855-4860 • [www.murdockmfg.com](http://www.murdockmfg.com)

Member of  
MORRIS GROUP  
INTERNATIONAL

A172UBLVR-BF2

07/01/16