



# OUTDOOR BOTTLE FILLERS

## M-OBR4 Series

### MODEL M-OBR4

#### RECESSED OUTDOOR BOTTLE FILLER

#### STANDARD FEATURES

- 115v Plug-in transformer
- Pushbutton and hands free sensor operated bottle filler
- 100 mesh inlet strainer
- Laminar flow water supply
- 1.0 GPM fill rate
- Lead-free
- Lead and cyst filter for bottle filler
- Meets ADA forward and side reach requirements
- Vandal-resistant design
- Gasketed door for weather resistance
- Resistant to sunlight, heat, moisture and wear

#### SUGGESTED SPECIFICATIONS

Model M-OBR4 is a Recessed outdoor bottle filler. Housing has a slim and trim look that blends into your environment. Unit also has a strong vandal-resistant design for years of trouble-free service. Bottle filler shall be activated by a 9 volt sensor or a pushbutton as standard. Fixture has a self-closing pushbutton, needing less than 5 pounds of force which shall activate the internally mounted valve. When installed properly, the bottle filler complies with ADA forward and side reach requirements. Bottle filler is fabricated of type 304 stainless steel. Unit complies with ANSI A117.1, Public Law 111-380 (NO-LEAD), CHSC 116875 and NSF/ANSI 61, Section 9.



#### MODEL:

(Must Specify)

- |                                 |                                |
|---------------------------------|--------------------------------|
| <input type="checkbox"/> M-OBR4 | Satin stainless finish (Shown) |
| <input type="checkbox"/> M-OBR5 | Green powder-coated            |
| <input type="checkbox"/> M-OBR6 | Red powder-coated              |
| <input type="checkbox"/> M-OBR7 | Blue powder-coated             |
- Custom color finishes available upon request*

#### OPTIONS

(additional costs may be incurred)

- |                                |  |
|--------------------------------|--|
| <input type="checkbox"/> -BAT  | Battery operated<br>(N/A with bottle counter)  |
| <input type="checkbox"/> -BCD  | Bottle counter display   |
| <input type="checkbox"/> -FRA1 | Freeze-resistant valve, single valve<br>(Less filter and sensor)                           |
| <input type="checkbox"/> -LOGO | Customer specified logo  |
| <input type="checkbox"/> -MO   | Bottle filler operated by pushbutton only<br>(Standard with freeze-resistant valve)        |
| <input type="checkbox"/>       | A9100080-A 8 GPH remote water chiller<br>(Locate on interior wall, not exposed to weather) |



Member of  
U.S. Green  
Building  
Council



Recyclable  
Product



Water  
Conserving  
Product

Please visit [www.murdockmfg.com](http://www.murdockmfg.com)  
for most current specifications.

Complies  
with the  
following  
standards:



Test rating conditions are  
compliant with ARI 1010.



**MURDOCK MFG.** • 15125 Proctor Avenue • City of Industry, CA 91746 USA  
Phone 800-453-7465 or 626-333-2543 • Fax 626-855-4860 • [www.murdockmfg.com](http://www.murdockmfg.com)

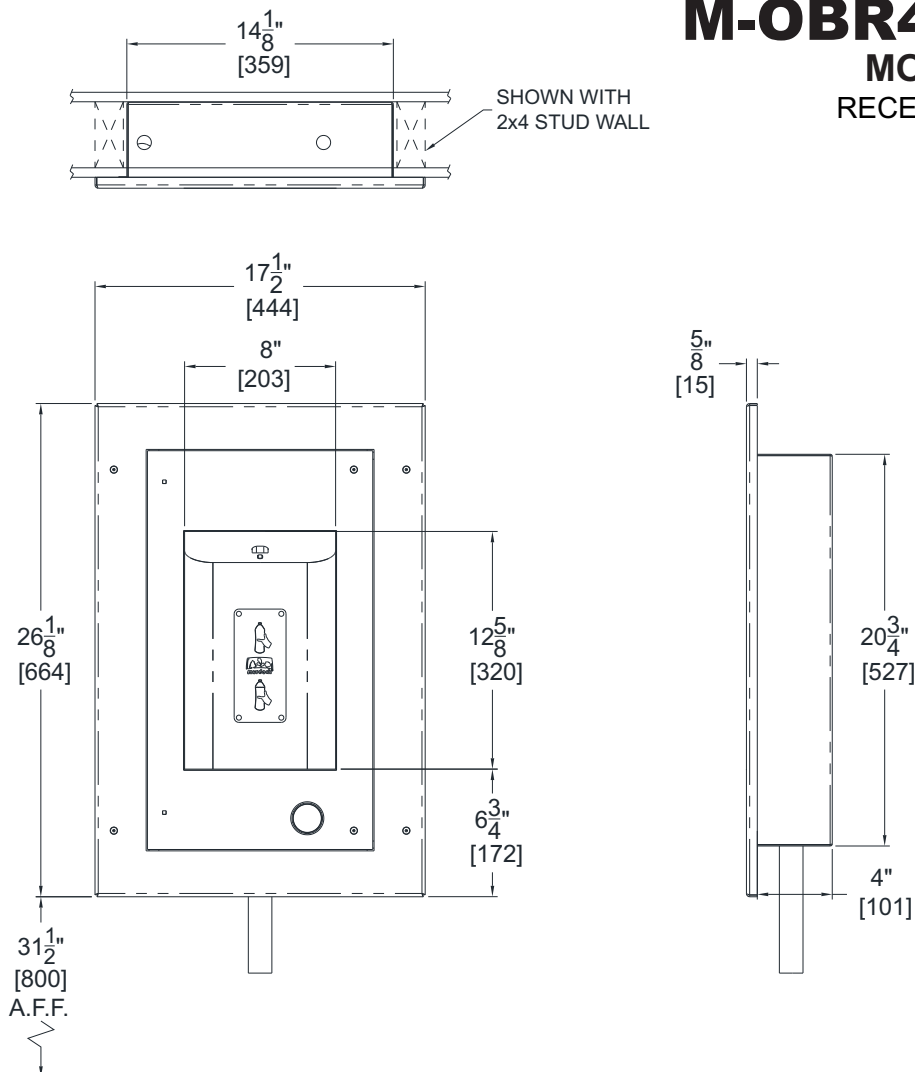
Member of  
**MORRIS GROUP**  
INTERNATIONAL



# OUTDOOR BOTTLE FILLERS

All dimensions are subject to manufactures tolerance of plus or minus 1/8" nominal and subject to change without notice. Murdock Mfg. assumes no responsibility for use of void or superseded data. Dimensions may change with the addition of optional accessories. Murdock Mfg.™, Member of Morris Group International™. Please visit [www.Murdockmfg.com](http://www.Murdockmfg.com) for most current specifications.

## M-OB R4 Series MODEL M-OB R4 RECESSED OUTDOOR BOTTLE FILLER



### GENERAL NOTES:

1. ALL DIMENSIONS ARE IN INCHES [MM]
- \*2. DIMENSIONS SHOWN ARE FOR RECOMMENDED ADULT HEIGHT. ADJUST VERTICAL DIMENSIONS NECESSARY TO COMPLY WITH FEDERAL, STATE & LOCAL CODES.
3. STOP VALVE NOT PROVIDED

Murdock Mfg.™ warrants that its products are free from defects in material or workmanship under normal use and service for a period of one year from date of shipment. Murdock's liability under this warranty shall be discharged solely by replacement or repair of defective material, provided Murdock™ is notified in writing within one year from date of shipment, F.O.B. Industry, California.

<b>SELECTION SUMMARY &amp; APPROVAL FOR MANUFACTURING</b>	Model Number & Options _____	Quantity _____	<p>All dimensions are subject to manufactures tolerance of plus or minus 1/8" nominal and subject to change without notice. Murdock assumes no responsibility for use of void or superseded data. Dimensions may change with the addition of optional accessories. Murdock Mfg.™, Member of Morris Group International™. Please visit <a href="http://www.murdockmfg.com">www.murdockmfg.com</a> for most current specifications.</p>
	Company _____		
	Contact _____	Title _____	
	Signature (Approval for Manufacturing) _____		
	Date _____		

**MURDOCK MFG.** • 15125 Proctor Avenue • City of Industry, CA 91746 USA  
Phone 800-453-7465 or 626-333-2543 • Fax 626-855-4860 • [www.murdockmfg.com](http://www.murdockmfg.com)

Member of  
**MORRIS GROUP  
INTERNATIONAL**