



HYDRANTS

M-3515 GUARDIAN PLUS DUAL CHECK

1/4 TURN NON-FREEZE HYDRANT WITH AUTOMATIC DRAINING, INTEGRAL VACUUM BREAKER, INTEGRAL SERVICE SHUT-OFF VALVE, DUAL CHECK VALVE AND STAINLESS STEEL BOX

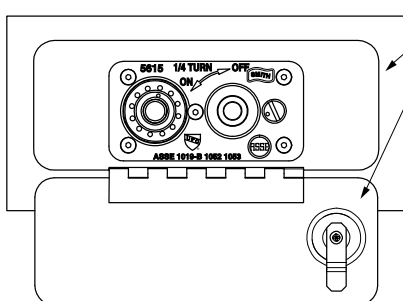
FUNCTION: Provides positive non-freeze protection where water is required at the outside of the building and features an integral vacuum breaker, dual check valve and water service shut-off valve. The stainless steel box conceals the nozzle and operating mechanism. The locking cover prevents unauthorized use.

1/4 Turn of the Key or Wheel Handle Allows Full Flow to be Obtained

Meets ASME A112.21.3M

Complies with ASSE 1019-B, 1052 & 1053

IAPMO Listed - File # 2749



FRONT VIEW with COVER OPEN

NOTES:

1. Recommended wall opening 3-3/16" (83) x 8-1/2" (215).
2. When ordering, specify wall thickness in 1" (25) increments as follows 4, 5, 6, 24.
3. All hydrants are manufactured with "NO-LEAD" brazing rings and USDA Approved lubricants.
4. When wall clamp -WC is desired, increase wall thickness dimension by 2" (51).
5. Add 3/4" (19) to Overall Length When Specified.
6. When specifying -SAP mild climate the wall the wall thickness shall be 3" (76).
7. Dimensions shown in parentheses are in millimeters.
8. The California Lead Laws and NSF/ANSI Standards 61-2008 - Drinking Water System Components are not applicable to this hydrant as it is not intended to convey/dispense water for human consumption through drinking or cooking.
9. 38" (10) when optional box face material is specified
10. An additional inlet isolation or shut-off valve is usually not needed with this hydrant, but if required it should be mounted ten (10) feet or more away from the hydrant inlet.
11. Working Pressure:
25 psi to 125 psi (172 kPa to 862 kPa)
12. Temperature Range:
33°F to 140°F (.6°C to 60°C).
13. This ASSE 1019 device shall not be subjected to more twelve (12) hours of continuous water pressure.
14. FOR IRRIGATION PURPOSES ONLY.

REGULARLY FURNISHED:

Bronze Quarter Turn Non-Freeze Automatic Draining Hydrant with Stainless Steel Face, Hose Connection, Integral Vacuum Breaker, Integral Service Shut-Off Valve, Dual Check Valve, "T" Handle Key and Stainless Steel Box with Full 180° Cover Opening.

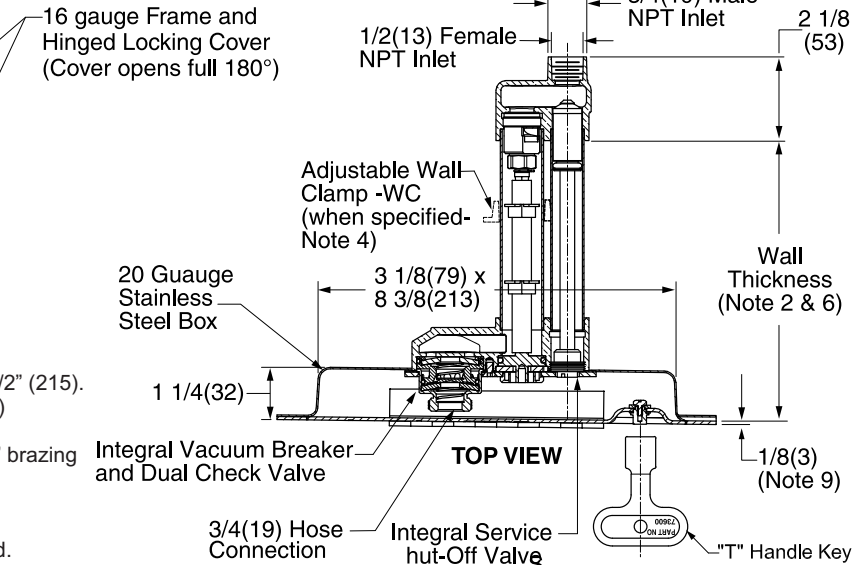
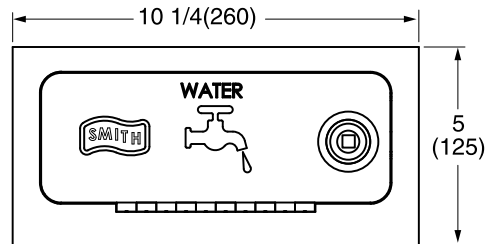


FIG. M-3515



FRONT VIEW

Seepage of a small amount of water may occur from the vacuum breaker upon initial opening and closing of the hydrant. This is normal operation.

VARIATIONS:

- ☐ Adjustable Wall Clamp -WC (Note 4)
- ☐ 1" Hose Connection -HC1
- ☐ 1" Male NPT Inlet
- ☐ Connection -IC1 (Note 5)
- ☐ Mild Climate -SAP (Note 6)
- ☐ Cylinder Lock -CL
- ☐ Wheel Handle -WH

OPTIONAL MATERIALS:

- ☐ Polished Bronze Box Face -PB
- ☐ Nickel Bronze Box Face -NB
- ☐ Rough Bronze Box Face -RB
- ☐ Chrome Plated Box Face -CP

Please visit www.murdockmfg.com for most current specifications.

MURDOCK MFG. • 15125 Proctor Avenue • City of Industry, CA 91746 USA
Phone 800-453-7465 or 626-333-2543 • Fax 626-855-4860 • www.murdockmfg.com

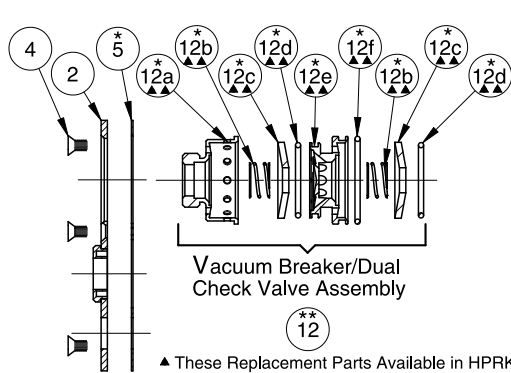
Member of
MORRIS GROUP
INTERNATIONAL



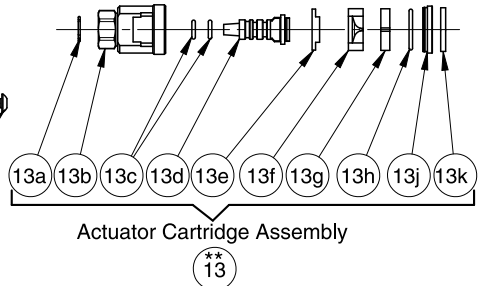
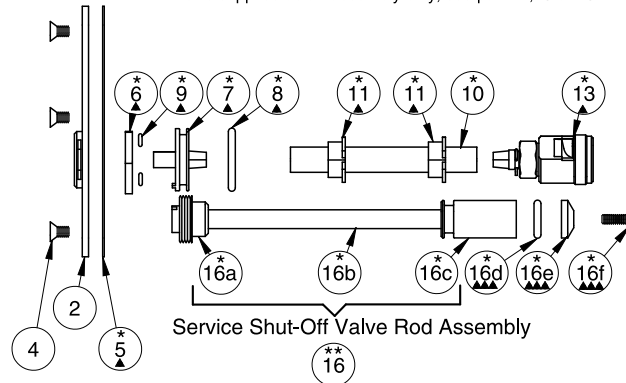
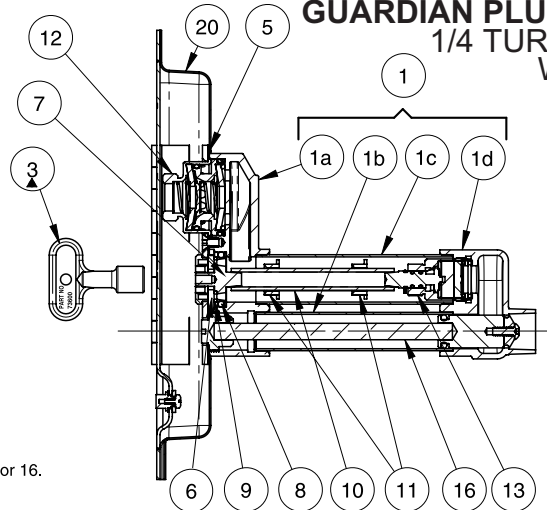
HYDRANTS

Hydrant Part List

**GUARDIAN PLUS DUAL CHECK
1/4 TURN NON-FREEZE
WALL HYDRANT**



- ▲ These Replacement Parts Available in HPRK-19
- ▲▲ These Replacement Parts Available in HPRK-19VB
- ▲▲▲ These Replacement Parts Available in HPRK-15SV
- *These Parts Accessible from Face of Hydrant by Removing Wall Plate Assembly.
- **Parts supplied as an assembly only, see part 12, 13 or 16.



HYDRANT PARTS LIST

NO.	DESCRIPTION	NO.	DESCRIPTION	NO.	DESCRIPTION	NO.	DESCRIPTION
1	Casing Assembly	9	Drain Hole Seal (2)	13a	**Retaining Ring	16	Service Valve Rod Assembly
1a	Head	10	Operator Rod	13b	**Valve Body	16a	**Service Valve Operator
1b	Casing	11	Operator Rod Guides (2)	13c	**Actuator O-Ring (2)	16b	**Service Valve Rod
1c	Casing	12	Vacuum Breaker/Dual Check Valve Assembly	13d	**Valve Actuator	16c	**Service Valve Plunger
1d	Valve Housing	12a	**Vacuum Breaker Housing	13e	**Nylon Thrust Washer	16d	Service Valve O-Ring
2	Wall Plate Assembly	12b	**Spring (2)	13f	**Rotating Ceramic Disc	16e	Service Valve Conical Washer
3	Key	12c	**Cone Washer (2)	13g	**Fixed Ceramic Disc	16f	Service Valve Washer Screw
4	Wall Plate Securing Screw (5)	12d	**Small O-Ring	13h	**O-Ring	20	Box Assembly
5	Wall Plate Gasket	12e	**Flow Diverter	13j	**O-Ring Gasket Retainer		
6	Stationary Operator Piece	12f	**Large O-Ring	13k	**Rubber Seal		
7	Moveable Operator Piece	13	Actuator Cartridge Assembly				
8	Moveable Operator O-Ring						

ONE YEAR LIMITED WARRANTY - Parts are warranted for one (1) year from date of shipment.

SELECTION SUMMARY & APPROVAL FOR MANUFACTURING

All dimensions are subject to manufactures tolerance of plus or minus 1/8" nominal and subject to change without notice. Murdock Mfg. assumes no responsibility for use of void or superseded data. Dimensions may change with the addition of optional accessories. Murdock Mfg.™, Member of Morris Group International™. Please visit www.Murdockmfg.com for most current specifications.

Model Numbers & Options _____ Quantity _____
Company _____ Date _____
Contact _____ Title _____
Approval for Manufacturing/Signature _____

MURDOCK MFG. • 15125 Proctor Avenue • City of Industry, CA 91746 USA
Phone 800-453-7465 or 626-333-2543 • Fax 626-855-4860 • www.murdockmfg.com

Member of
MORRIS GROUP
INTERNATIONAL