



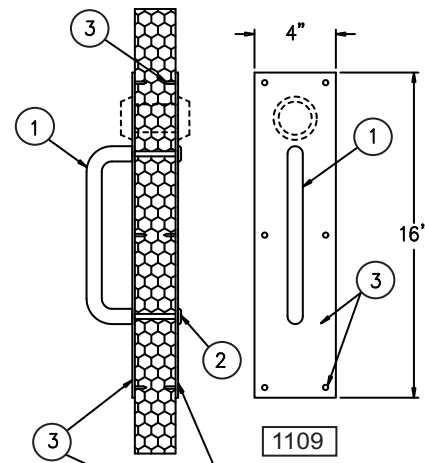
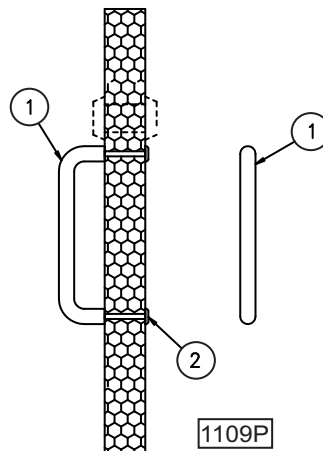
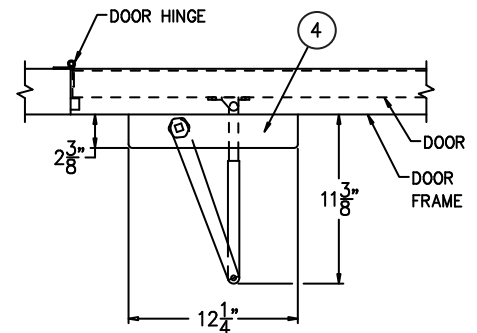
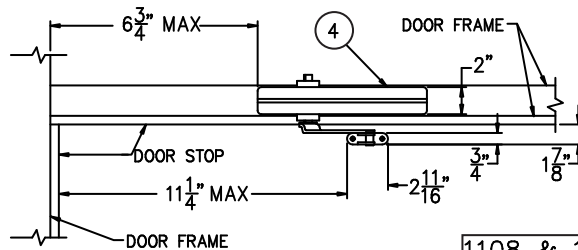
RESTROOM ACCESSORIES

MURDOCK-SUPER SECUR FACILITIES ACCESSORIES

MODEL #
1108-1109

DOOR HARDWARE

ITEM	DESCRIPTION	QTY
1	8" DOOR PULL	1
2	1/4" MOUNTING SCREWS & WASHERS	2
3	PUSH/PULL PLATES W/SIX SCREWS	1
4	CLOSER W/MOUNTING SCREWS	1



TECHNICAL DATA:

1108 Door Closer is LCN model 1460 and is non-handed. Closer meets ADA requirements when adjusted to 8.5 lb maximum force to open the door. Closer is mounted on the top jamb of door frame on the push side. Finish is powder coated aluminum.

1108A Door Closer is LCN model 1461 and is non-handed. Closer meets ADA requirements when adjusted to 5.0 lb maximum force to open the door. Closer is mounted on the top jamb of door frame on the push side. Finish is powder coated aluminum.

Push/Pull Plate Set is used on entrance doors with deadbolt locks. The deadbolt lock, which is not used by the public, is installed thru holes punched in tops of plates. Set is fabricated from stainless steel with a satin finish and includes push plate, pull plate, 8" handle and mounting screws.

Pull Handle will meet ADA requirements when deadbolt lock is mounted at standard height of 40" above floor and handle is installed below lock as shown. Pull handle only is used for chase-storage doors that have deadbolt locks not used by the public.

MODEL NUMBER:

- ☐ 1108 Door Closer for Exterior Doors
- ☐ 1108A Door Closer for Exterior Doors
- ☐ 1109 Push/Pull Plate Set with Handle
- ☐ 1109P Pull Handle Only

SELECTION SUMMARY & APPROVAL FOR MANUFACTURING

All dimensions are nominal and subject to manufacturer's change without notice. Murdock-Super Secur assumes no responsibility for use of void or suspended data. © Copyright 2006, Murdock-Super Secur, a division of Acorn Engineering Company. Please visit www.murdock-supersecur.com for most current specifications.

Model Numbers & Options _____ Quantity _____
 Company _____ Date _____
 Contact _____ Title _____
 Approval for Manufacturing/Signature _____